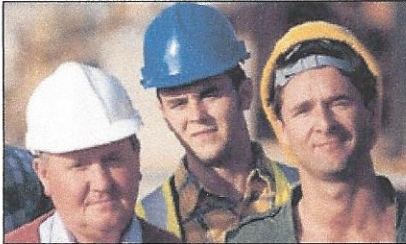




SAVE ■ PLAN ■ ENJOY

WELLS
FARGO



**The transition is over!
You can now access your Alaska
Carpenters Defined Contribution
Trust Fund account!**

The Alaska Carpenters Defined Contribution Trust Fund has successfully completed its transition to Wells Fargo and you can now access your account.

Accessing your account

When you access your retirement account for the first time, you'll need some basic information:

Wells Fargo Retirement Plan Website: www.retirement.wellsfargo.com

Click on *First Time User Registration* to begin the registration process. You'll need your Social Security number (SSN) and your birth date (mm/dd/yyyy). For example, May 8, 1971 should be entered as 05/08/1971.

Retirement Service Center: 1-866-640-5138

- Automated telephone system with 24-hour access
- Representatives are available Monday through Friday from 3:00 a.m. until 7:00 p.m. Alaska Time

You'll need your SSN and your personal identification number (PIN), which is currently the last four digits of your SSN. You'll be required to change your PIN the first time you call.

Manage your retirement savings

You can visit the Wells Fargo Retirement Plan Website or call the Retirement Service Center to manage your account and access a full range of resources.

- Check your account balance
- Access fund information
- Make investment changes
- Access online calculators and educational articles
- Request a copy of your statement

Recordkeeping, trustee and/or custody services are provided by Wells Fargo Institutional Retirement and Trust, a business unit of Wells Fargo Bank, N.A. This information is for educational purposes only and does not constitute investment, financial, tax or legal advice. Please contact your investment, financial, tax or legal advisor regarding your specific needs and situation.